

Treade Feeder Instructions

5kg, 8kg, 12kg and 20kg



Inside the box

Body

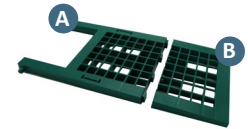


Lid



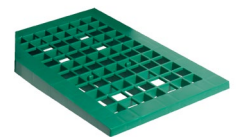
Treadles- part A & B*

*5kg & 8kg versions only



Treadle*

*12kg & 20kg versions only



Connectors x2



Shaft



M6 Nuts x2



Hinge Pins x2



Split Pins x2



M4 Screws x2



Arm Hinges x2

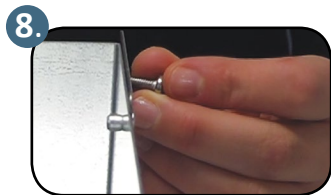
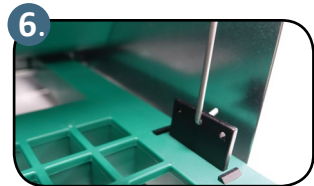
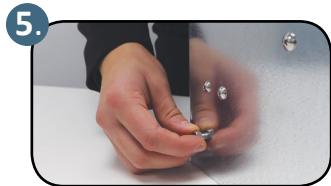
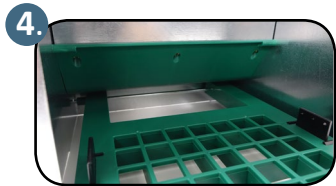
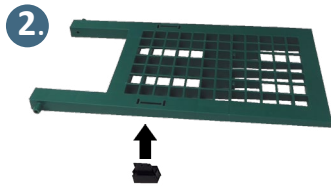
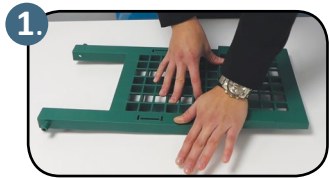


M4 Nuts x2



Treadle Feeder Instructions

5kg, 8kg, 12kg and 20kg



Assembly Complete!



1. For 5kg and 8kg versions only - attach part B of the Treadle to part A
2. Push the connectors up through the holes in the base of the Treadle until they click
3. Position the Treadle inside the Body so that the 2 holes at the start of the Treadle line up against the 2 holes at the bottom of the body
4. Thread the shaft through the holes at the bottom of the Body and through the Treadle
5. Screw the 2 M6 Nuts to the Shaft on the outside of the Body securing everything in place
6. Fix the 2 Arm Hinges in place so that one end is attached to the hinge and the other to the Mount Connector already fitted inside the body.
7. Move the bracket into position so that it overhangs the body slightly with the corner hole accessible.
8. Push the 2 M4 screws into place through the middle hole of the bracket and through the Body
9. Screw the 2 M4 Nuts onto the M4 screws on the inside of the Body
10. Position the holes of the Lid in place so that they line up over the holes of the bracket that overhang the Body.
11. Push the 2 Hinge Pins through the holes and secure them in place with a split pin on either side

Watch the Video!



Treadle Feeder Instructions

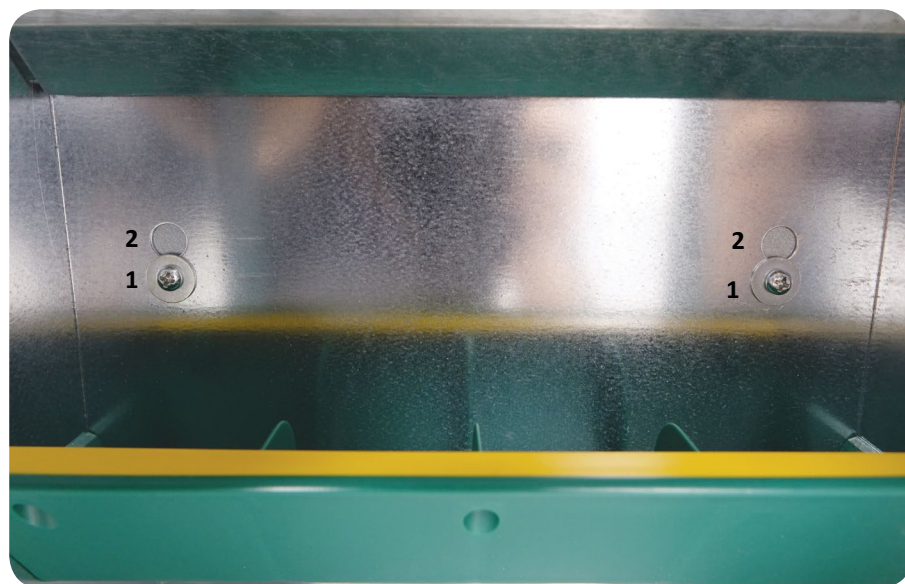
5kg, 8kg, 12kg and 20kg

Adjustable Feed Settings

Our ETON® Treadle Feeders now come complete with an adjustable feed distribution option.

This innovation is made possible by an extra back plate to the inclined plate which opens when the animal steps on the treadle. As shown in the pictures below, the standard setting is number one. If the setting is changed to number two which is 9mm higher, this creates more space for the feed to go through.

Please make sure that the feeder is free from food when you change the setting.



Minimum Animal Weight Settings

The ETON® Treadle Feeder can be operated by any poultry but the access to the feed needs to be adjusted depending on the weight of the animals. Each model of the Treadle Feeder has five different weight settings.

Please use the tables below to decide which setting is best for your Poultry. An example is if your birds are 500g you would choose A as the bottom setting and 2 as the top setting for a 5kg or 8kg feeder. For the 12kg or 20kg feeder you would choose A as the bottom setting and 1 as the top setting.

5kg and 8kg Models

		Bottom Setting		
		A	B	C
Top Setting	1	350 GR	Do not use	
	2	400 GR	Do not use	Do not use
	3	750 GR	Do not use	Do not use
	4	Do not use	1000 GR	Do not use
	5	Do not use	1400 GR	

12kg and 20kg Models

		Bottom Setting		
		A	B	C
Top Setting	1	450 GR	Do not use	
	2	600 GR	Do not use	Do not use
	3	1200 GR	Do not use	Do not use
	4	Do not use	1600 GR	Do not use
	5	Do not use	2500 GR	

Bottom Setting



Top Setting



Treadle Feeder Instructions

5kg, 8kg, 12kg and 20kg

Training birds to use the Treadle Feeder

When you first introduce your Treadle Feeder it could take up to three days for your birds to get used to it.

Here are a few training methods to make the process quick and easy:

- Put a stone or weight on the treadle to show the birds where the food is. You might need to leave this there for a day or two. Once the birds discover where the food is they will won't be afraid of using the feeder by themselves once you remove the weight.
- Remove all other feed sources and choose a time such as first thing in the morning when the birds are hungry for training. Ensure that the feeder is placed on an even surface to stop it wobbling around when in use. Use your toe/foot to open the open treadle door with the food accessible. At this point some of the braver birds are likely to eat. Allow them to do so and take your foot off the treadle to close the opening. Repeat this process until the birds begin to understand how it works.



Specification

Code	Description	Product Weight	Product Dimensions	Packaging Weight	Packaging Dimensions
661723	ETON Treadle Feeder 5kg	4.7kg	27.5 x 23 x 39.5cm	5kg	40 x 28 x 26cm
661724	ETON Treadle Feeder 8kg	5.1kg	27.5 x 23 x 46cm	5.5kg	45 x 28 x 26cm
661725	ETON Treadle Feeder 12kg	6.5kg	33.5 x 23 x 50cm	7.2kg	54 x 35.5 x 25.5cm
661726	ETON Treadle Feeder 20kg	7.8kg	33.5 x 23 x 66cm	7.8kg	64.4 x 35.5 x 25.5cm

Advantages:

- Vermin resistant
- Water tight -practical in outdoor conditions
- Mould growth is reduced by having a plastic feed trough with rounded corners.
- The design of the feed trough means that the animals cannot scratch food out of it thanks to dividers.
- The lid stays in a vertical position once opened making it easy to refill. The lid is also automatically locked when pressed down.
- Durable plastic treadle prevents excrement build up.
- Extensive possibilities to set the weight for optimum access to the trough. Minimum weight to be set is 250g up to a maximum weight of 2Kg. For animals with a body weight of 500g, for example the treadle weight should be set to 250g and for animals with a body weight of 5Kg this value should be 2Kg.
- All plastic parts are UV resistant
- Rigid body is made from 1mm thick galvanised metal
- The plastic trough means that the ETON Treadle Feeder is very quiet